

The Line Material Co.

South Milwaukee WI



William Kyle Sr.

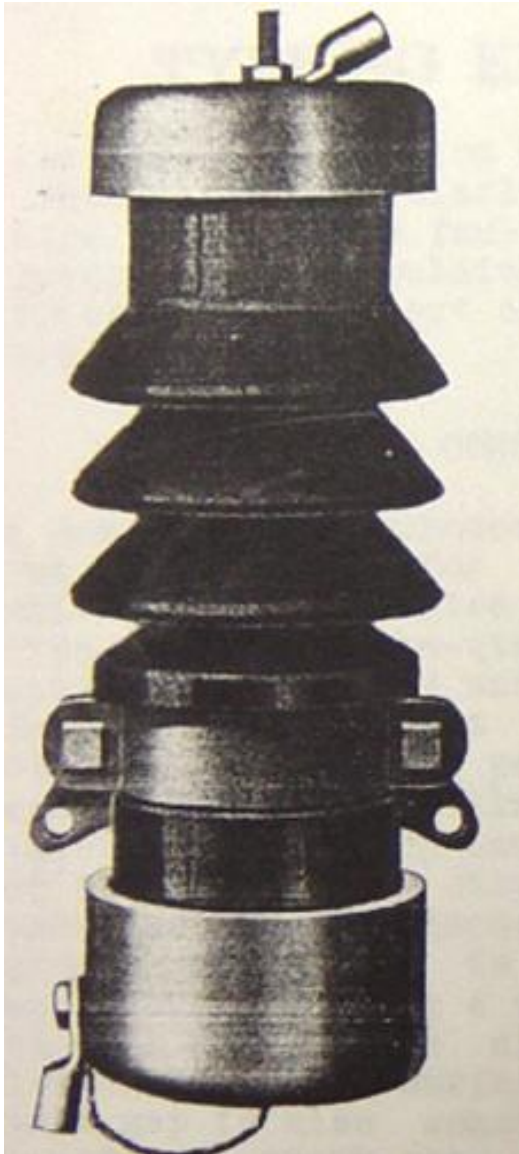
- **Started in 1911 by William Kyle Sr. and Lem Hendee**
- **The business focused on street lighting, distribution system insulators, and hardware for first 10 years**
- **First Fuse Patent in 1922**
- **First Circuit Breaker Patent in 1926**
- **First Arrester Patent 1928**



In 1911 WD Kyle Sr. Founded the Line Material Company in Milwaukee Wisconsin



First Line Material Co. Arrester



- Introduced in 1928
- Patented in 1930 to Alwin Steinmayer the Chief Engineer of Line Material
- Was an Expulsion Arrester
- Produced in Milwaukee at Central Plant
- 12 inches tall
- Ratings of 4.4kV, 6.6kV, 7.5kV, 11kV, and 13.2 kV



A G Steinmayer



May 13, 1930.

A. G. STEINMAYER

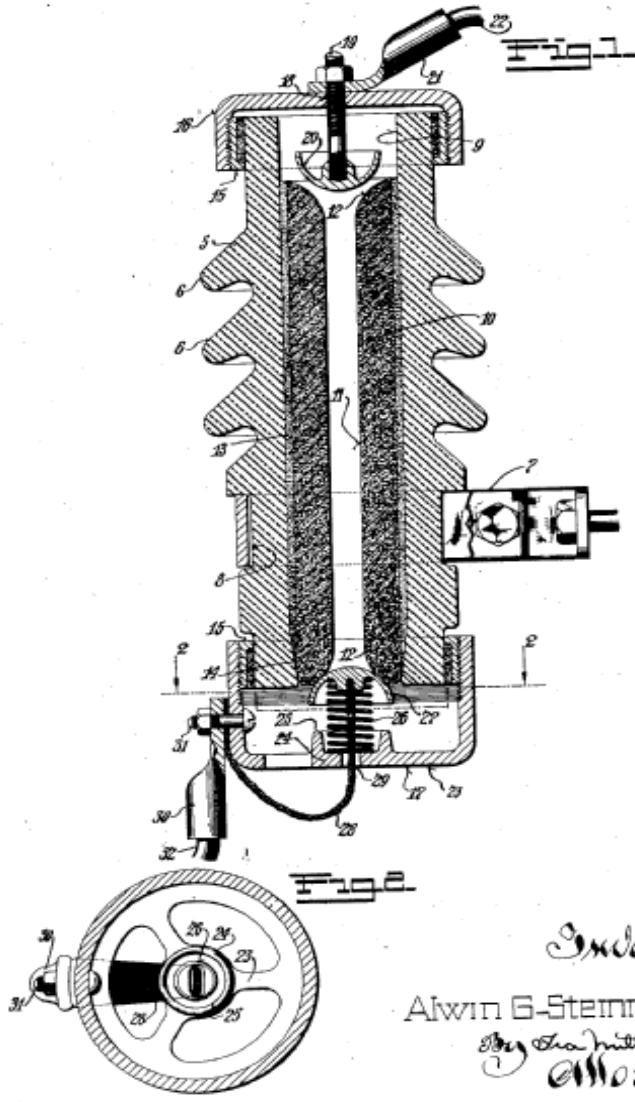
1,758,181

LIGHTNING ARRESTER

Filed May 10, 1928

2 Sheets-Sheet 1

Features



- A very important feature of this arrester was that it need not be inspected every day as was the case for many arresters in 1928
- Also the leakage current was very low being about $\frac{1}{2}$ amp.

Inductor

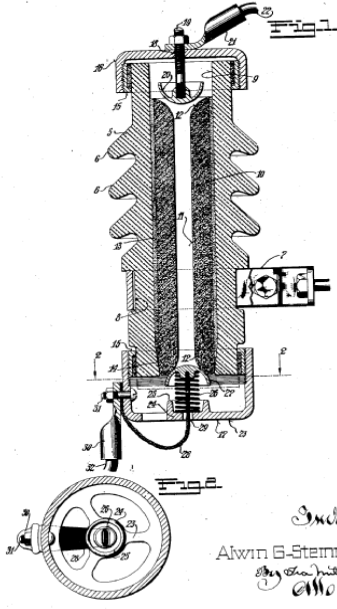
Alwin G. Steinmayer

*By the undersigned
Attorney*

May 13, 1930.

A. G. STEINMAYER
LIGHTNING ARRESTER
Filed May 10, 1928 2 Sheets-Sheet 1

1,758,181

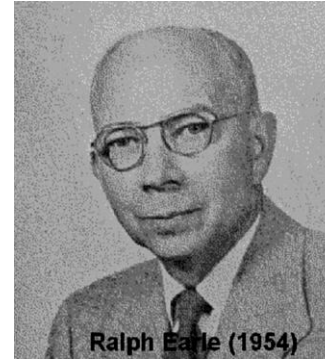


AG Steinmayer
1917 - 1955

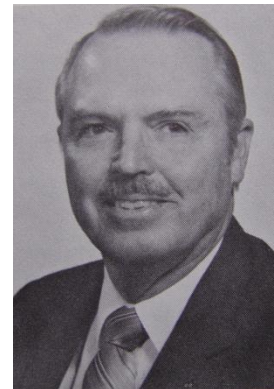


Herman Stoelting

Arrester Designers over the years at Line Material, McGraw Edison and Cooper



Ralph Earle



Stanley Kershaw
1951- 1995

Charles Clinkenbeard

1954- 1990

