

# ArresterFacts-001

## Arrester Lead Length

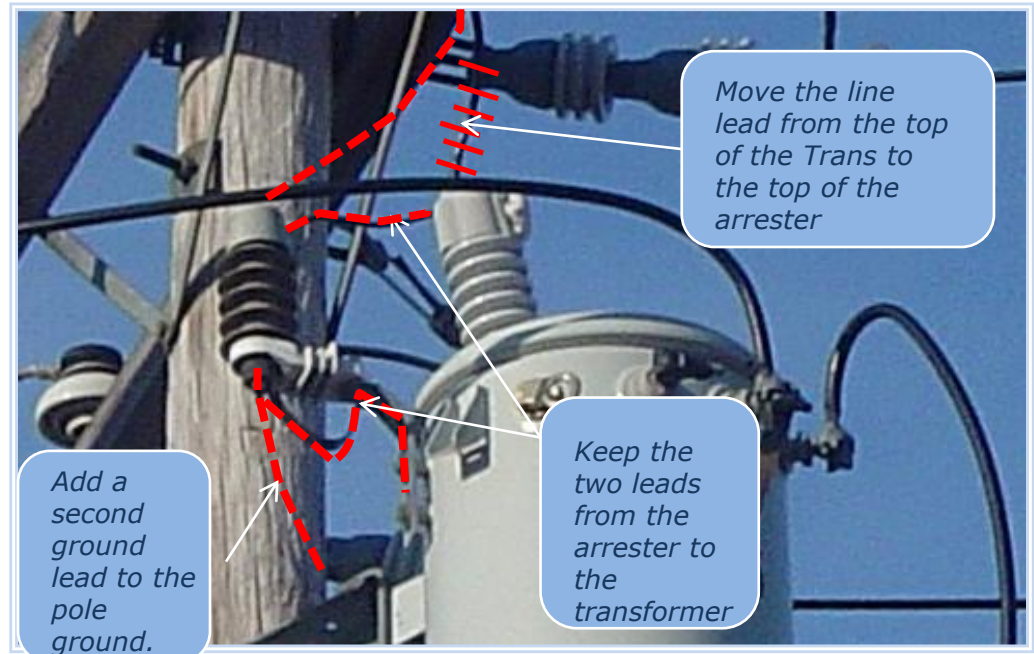
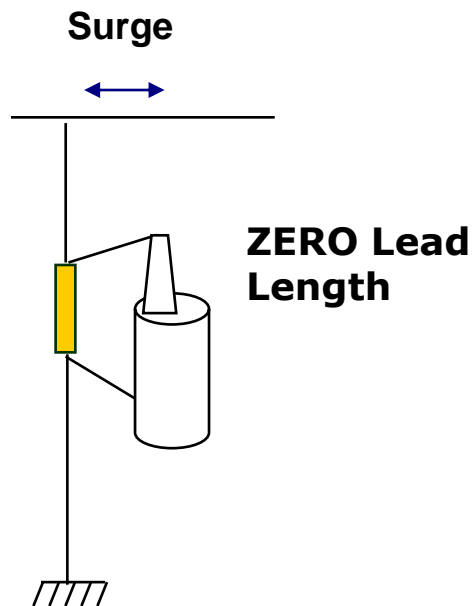


ArresterWorks.com

### Zero Lead Length Configuration

In the configuration below, two changes will turn this into a Zero Lead Length Configuration.

1. Move the line lead from the top of the transformer to the top of the arrester.
2. Add one more lead from the bottom of the arrester to the pole ground. (Do not remove the lead between the arrester base and the transformer ground.)



# ***ArresterFacts-001***

## ***Arrester Lead Length***



***ArresterWorks.com***

## ***Thank you for using ArresterFacts***

*This ArresterFacts is just one of many that make up the ArresterFacts Tutorial Series on Arresters.*

*All ArresterFacts are Copyrighted.*

*If you use any part of this presentation for training material, please give ArresterWorks proper reference.*

*Thank you for using ArresterWorks as your source of information on Arresters.*

*Jon Woodworth*